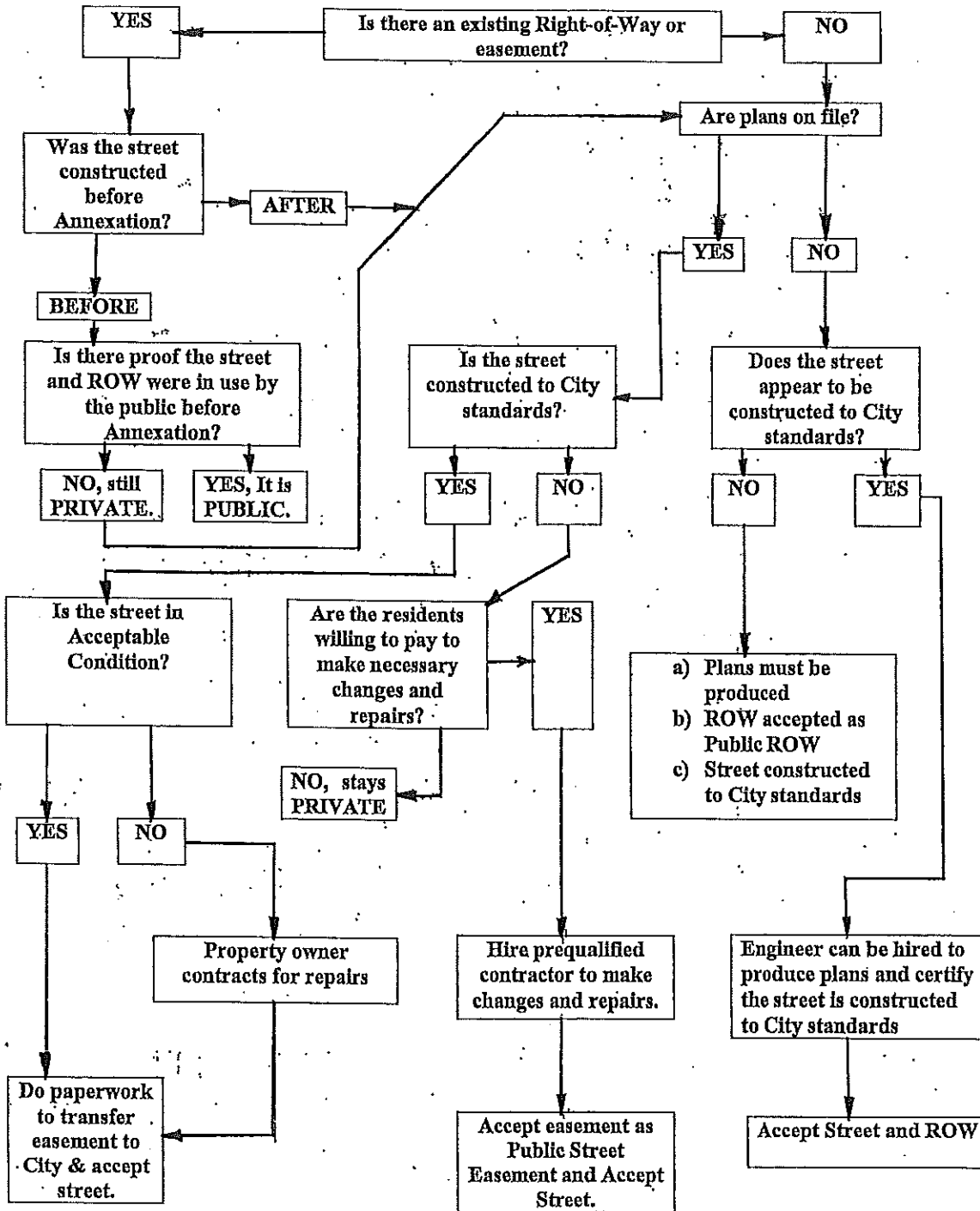
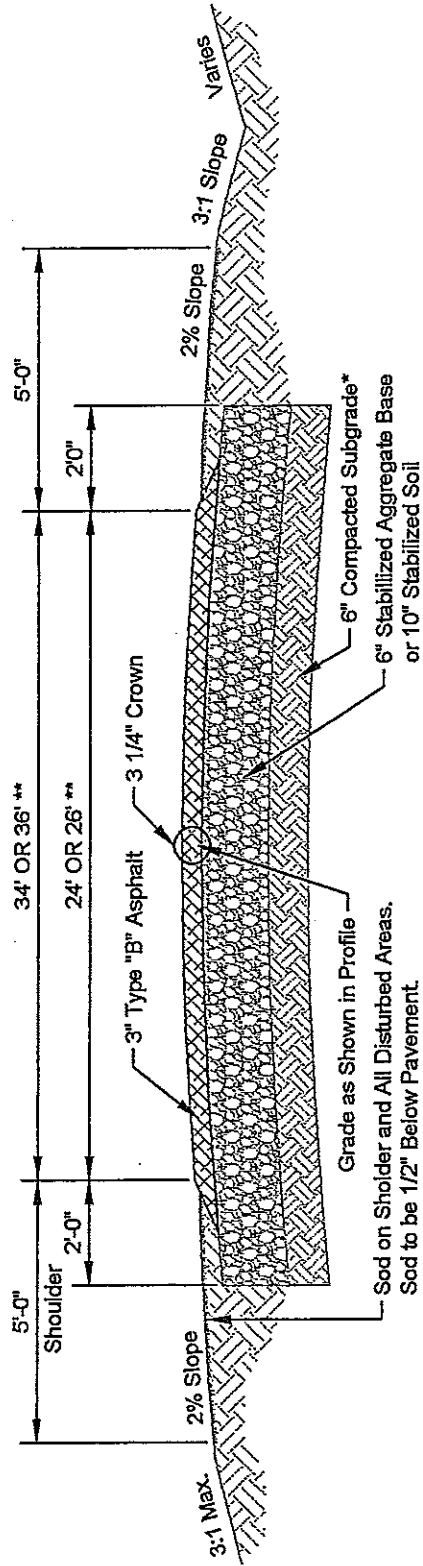


Method to Convert an Existing Private Street to a Public Street

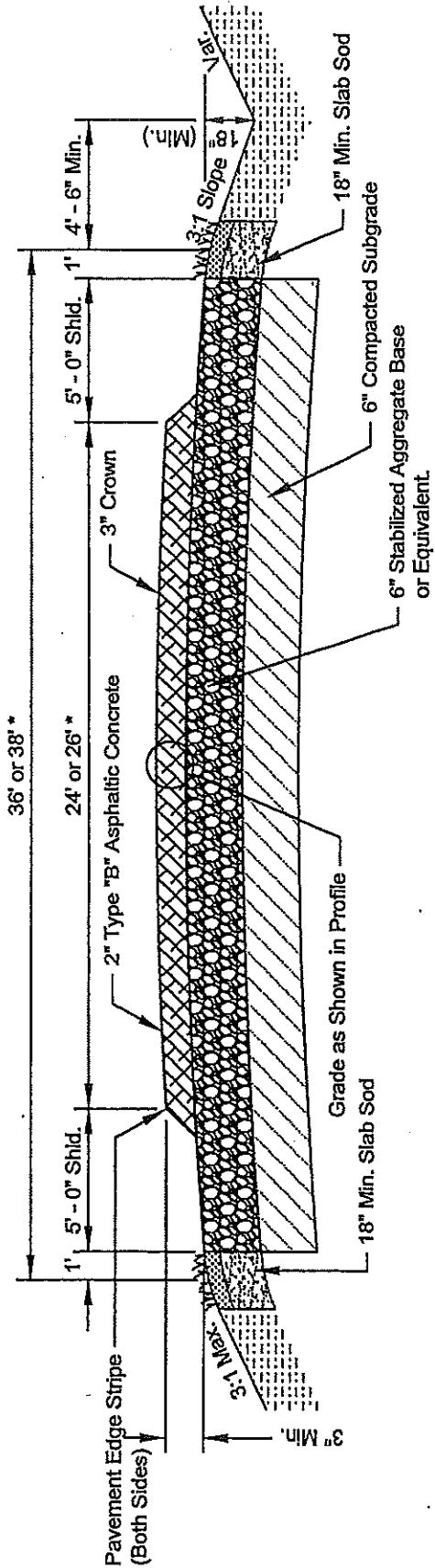




• TYPICAL SECTION •
 PUBLIC OR PRIVATE RURAL ROADWAY
 R-A and R-A2 Zoning Districts
 • 102 •

* To be used only with Aggregate Base
 ** As specified in the Subdivision Regulations - Design Standards for Rural Subdivisions;
 lots with 2 acres or larger 24' and 34'; lots less than 2 acres 26' and 36'.

Current Standard



* As specified by section 5.3.2 of the Subdivision Regulations.

• TYPICAL SECTION •
PUBLIC OR PRIVATE RURAL ROADWAY

Lots One Acre or Greater in Size
 • 102 •

Old Standard

PUBLIC OR PRIVATE RURAL ROADWAY

OKLAHOMA CITY
 PUBLIC WORKS ENGINEERING DIVISION

APPROVED BY:
Paul H. Brum
 PAUL H. BRUM, P.E. CITY ENGINEER

D-100-102
 1 OF 13 VSC